

Samsung Drive Manager User Manual

The contents of this manual are subject to change without notice.
Companies, names and data used in examples are not actual companies, names or data unless otherwise noted. This manual cannot be reproduced or used in part or in entirety in any way without written approval from Clarus, Inc.
All trademarks, copyrights, patent rights, and intellectual property rights pertaining to this manual belong to Clarus, Inc. The purchase of this manual does not constitute transfer of trademarks, copyrights, patent rights or intellectual property rights unless otherwise stipulated in an agreement with Clarus, Inc.

Copyright © 2011-2013 by Clarus, Inc.
All right reserved.

Product Enquiries
Clarus, Inc.

Website
<http://www.samsung.com/sec>

Chapter 1 Starting to Use Samsung Drive Manager

Before Installation

Samsung Drive Manager comprises Samsung AutoBackup (a personal backup solution), Samsung SecretZone, (a personal data protection solution), Samsung Secure Manager (a secure external hard disk management solution) and Samsung External Hard Drive management tools.

Samsung AutoBackup is a personal backup solution for backing up important files easily.

Samsung AutoBackup finds changed files and backs them up in real time, so you don't have to manage backup times.

Samsung SecretZone is a personal information protection solution that lets you create and use an encrypted disk on your Samsung External Hard Drive.

By using Samsung SecretZone, you can safely and conveniently protect important, confidential and personal data.

Samsung Secure Manager is a Samsung secure hard disk management solution that encrypts and saves all data.

All data saved on a Samsung secure hard disk is encrypted to safely protect important data. Data storage areas can be locked to prevent loss or theft of data stored on your hard disk.

Contents

CHAPTER 1 STARTING TO USE SAMSUNG DRIVE

MANAGER.....1

Before Installation.....2

Contents3

Using Samsung Drive Manager Safely.....6

Using Your Samsung External Hard Drive Correctly7

System Requirements for Using Samsung Drive Manager8

Connecting a Hard Disk.....9

Program Installation10

Program Start/Shutdown.....19

CHAPTER 2 USING SAMSUNG DRIVE MANAGER 21

2-1 SAMSUNG DRIVE MANAGER.....22

Execution.....23

Safe Removal24

Unlocking the Secure Hard Disk.....25

2-2 SAMSUNG AUTOBACKUP26

Backup.....27

[[Restore]].....35

[[Delete]].....37

2-3 SAMSUNG SECRETZONE39

[[Create New Secure Drive]]40

Connect Secure Drive.....46

Disconnect Secure Drive.....50

2-4 SAMSUNG SECURE MANAGER53

Using a Secure Hard Disk.....54

2-5 DIAGNOSTICS58

Diagnostic Test.....59

2-6 DISK MANAGEMENT61

What is Disk Management?.....61

Adding a Data Area.....61

Deleting a Data Area.....62

Chapter 1 Starting to Use Samsung Drive Manager

Formatting a Data Area.....	63
2-7 POWER SETTINGS.....	64
What is drive power settings?.....	64
Power Settings.....	64
2-8 SECURE UNLOCK.....	67
Using Secure Unlock.....	67
2-9 SAMSUNG PORTABLE SECRETZONE.....	69
What is Samsung Portable SecretZone?.....	69

CHAPTER 3 FUNCTIONS OF SAMSUNG DRIVE MANAGER

.....	72
3-1 SAMSUNG AUTOBACKUP.....	73
Samsung AutoBackup Screen.....	73
Backup Job List.....	75
Functions at the Top of the Samsung AutoBackup Screen.....	80
[[Create New Job]].....	82
[[Configure Backup Source]].....	84
[[Backed up Data]].....	87
Backup, Restoration and Deletion Progress.....	95
[[Log]].....	97
[[Info]].....	100
Backup Error.....	101
3-2 SAMSUNG SECRETZONE.....	103
What is Samsung SecretZone?.....	103
Functions of Samsung SecretZone.....	104
[[Connect/Disconnect Secure Drive]].....	104
Delete Secure Drive.....	105
Set Secure Drive.....	107
Secure Drive Log.....	112
3-3 SAMSUNG SECURE MANAGER.....	113
Functions of Samsung Secure Manager.....	114
3-4 SAMSUNG DRIVE MANAGER UPDATE.....	118
What is Samsung Drive Manager Update?.....	118
Using Samsung Drive Manager Update.....	119

TERMINOLOGY 122

Using Samsung Drive Manager Safely

It is advised that you understand your system environment and make appropriate preparations before using Samsung Drive Manager. If your system has not been cleaned (with unnecessary files removed, the hard disk checked, and the disk defragmented) for some time, take the following measures before using Samsung Drive Manager.

If system issues (an error message displayed during booting, system failure, etc.) are experienced, use an appropriate program to address such issues before using Samsung Drive Manager. If your system is not affected by serious issues, check the hard disk, cleanup unnecessary files, and use the disk defragmenter to optimize your system before using Samsung Drive Manager.

Important: Read the manual provided with your Samsung External Hard Drive before use.

Important: Invalid operations or unexpected system errors may cause a data loss on a external hard drive. Please backup the important data.

Using Your Samsung External Hard Drive Correctly

Follow the instructions below to maximize the lifespan of your Samsung External Hard Drive.

Regular Virus Scanning

Perform regular virus scanning to protect your Samsung External Hard Drive.

Safe Hardware Removal

Always use the Safely Remove Hardware function to remove your external hard disk or USB cable from your computer.

System Requirements for Using Samsung Drive Manager

The following are the minimum system requirements for installing and using Samsung Drive Manager.

	Minimum Requirements
CPU	Intel Pentium III 1GHz or higher
Memory	512MB or higher
HDD	500MB or higher
OS	Windows XP Family SP2 or higher, or Window Vista Family, or Windows 7 Windows 8 Internet Explorer 5.5 or higher (6.0 or higher recommended)

Connecting a Hard Disk

A USB cable to connect your Samsung External Hard Drive and PC is required. Connect the smaller terminal on the USB cable to your Samsung hard disk and the larger terminal to your PC.

Connect a power adaptor to your Samsung external hard disk if required.

Program Installation

When your PC and Samsung External Hard Drive are connected, the Samsung Drive Manager installation screen is automatically displayed.

Note: The installation screen is not automatically displayed on Windows Vista or Windows 7/8; you will need to manually run Samsung Drive Manager.exe on your Samsung External Hard Drive.

Note: Depending on your OS settings, the installation screen may not appear automatically. In such a case, manually run Samsung Drive Manager.exe on your Samsung External Hard Drive.

Select Run Samsung Drive Manager on the installation screen, and click [OK].

[Image] Setup Selection Screen

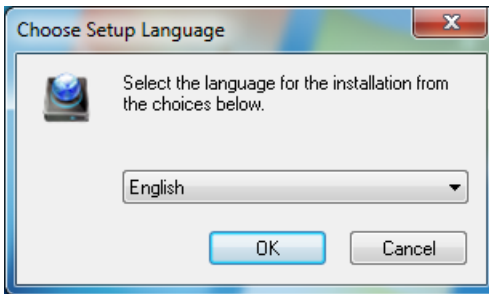


Select a language

Select a language to perform the installation in.

1. Select the Select Language window
2. Select a language
3. Select [OK]

[Image] Language Selection Screen



Installation

The Installation Wizard screen is displayed after a language is selected.

On the Samsung Drive Manager installation screen:

4. Click [Next >].

[Image] Samsung Drive Manager Installation Wizard Screen



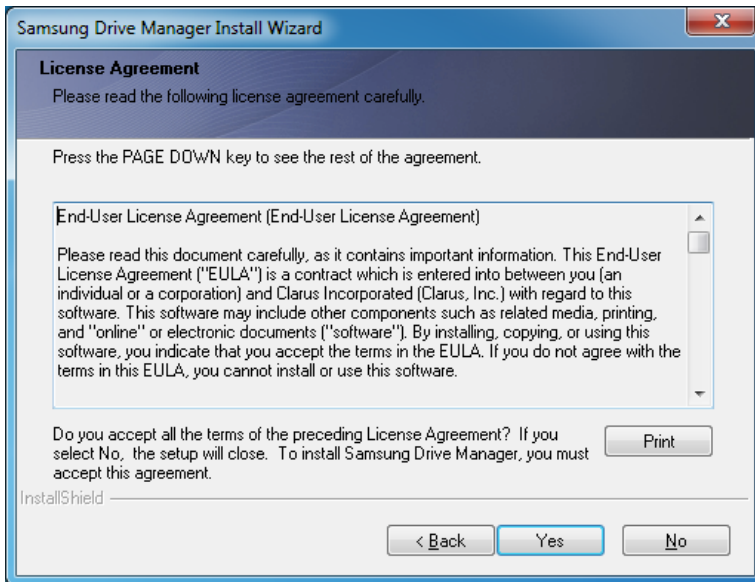
User Agreement

Samsung Drive Manager user agreement is displayed.

If you agree after reading the user agreement:

5. Click [Yes]

[Image] User Agreement Display Wizard Screen



Note: You must read and agree to the user agreement to proceed with the Samsung Drive Manager installation.

Installation Folder Selection

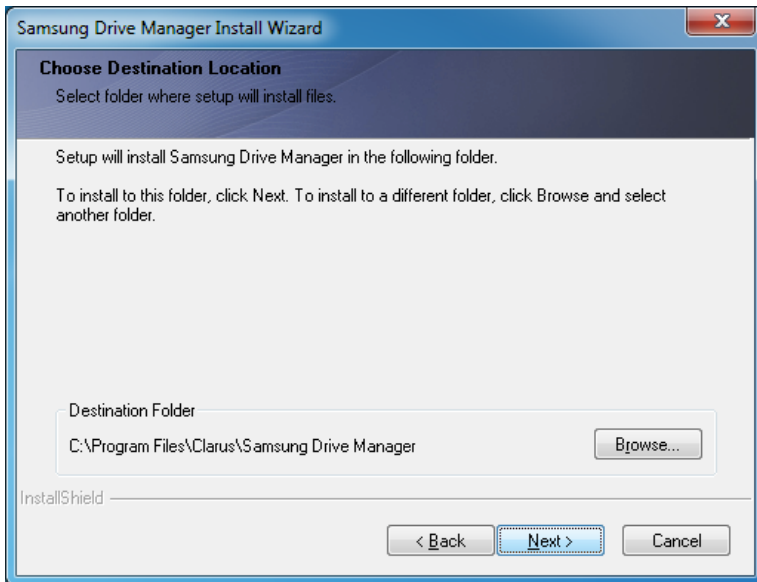
The installation folder selection screen is displayed for Samsung Drive Manager.

The default installation folder is C:\Program Files\Clarus\Samsung Drive Manager.

After changing the installation folder or selecting the default folder by clicking [Browse]:

6. Click [Next >].

[Image] Installation Path Selection Wizard Screen

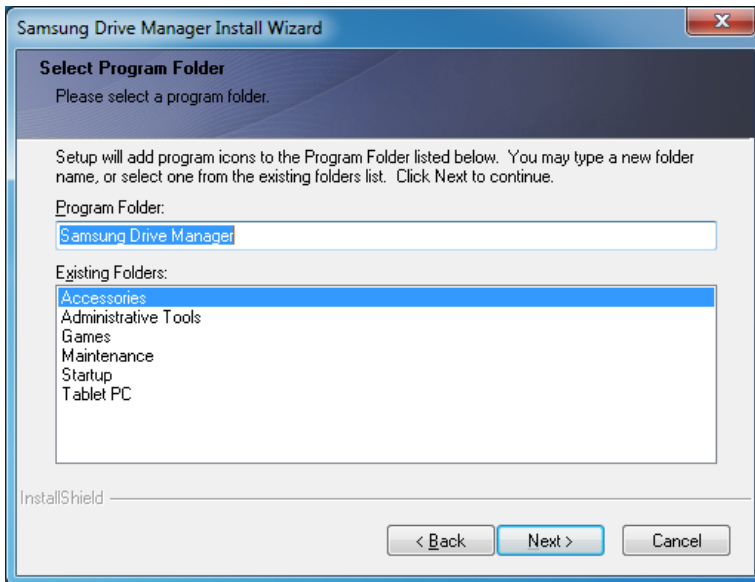


Chapter 1 Starting to Use Samsung Drive Manager

After selecting a program folder in which to register the Samsung Drive Manager icons on the program folder selection screen:

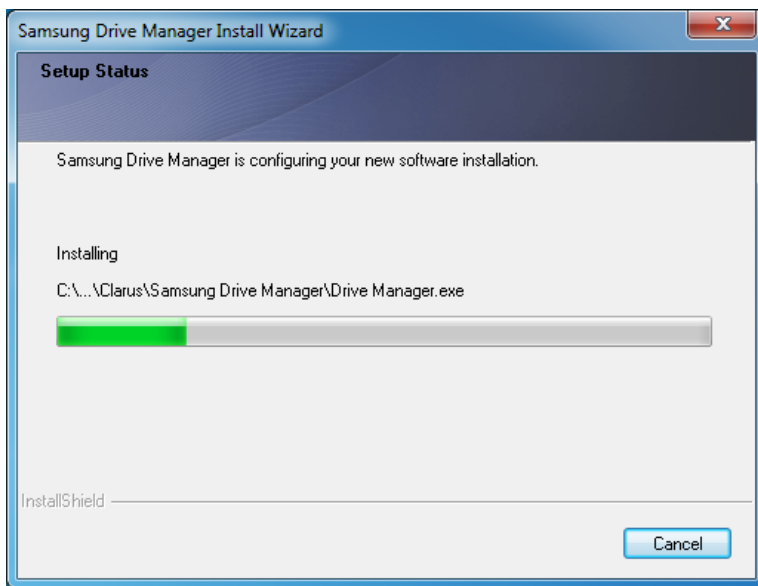
7. Click [Next >].

[Image] Program Folder Selection Wizard Screen



Chapter 1 Starting to Use Samsung Drive Manager

[Image] Installation Progress Display Wizard Screen



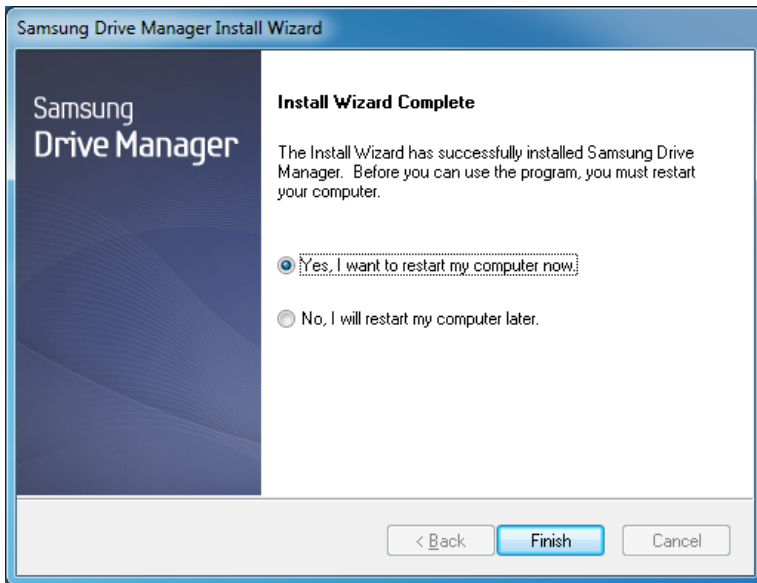
Chapter 1 Starting to Use Samsung Drive Manager

Your computer can be restarted after the program is installed.

After confirming that the computer shall restart (if desired):

8. Click [Done].

[Image] Installation Completion Display Wizard Screen



Note: Restart your computer when prompted to ensure normal execution of Samsung Drive Manager.

Samsung Drive Manager is installed.

Program Start/Shutdown

The following are the instructions on how to use Samsung Drive Manager.

[Image] Samsung Drive Manager Icon

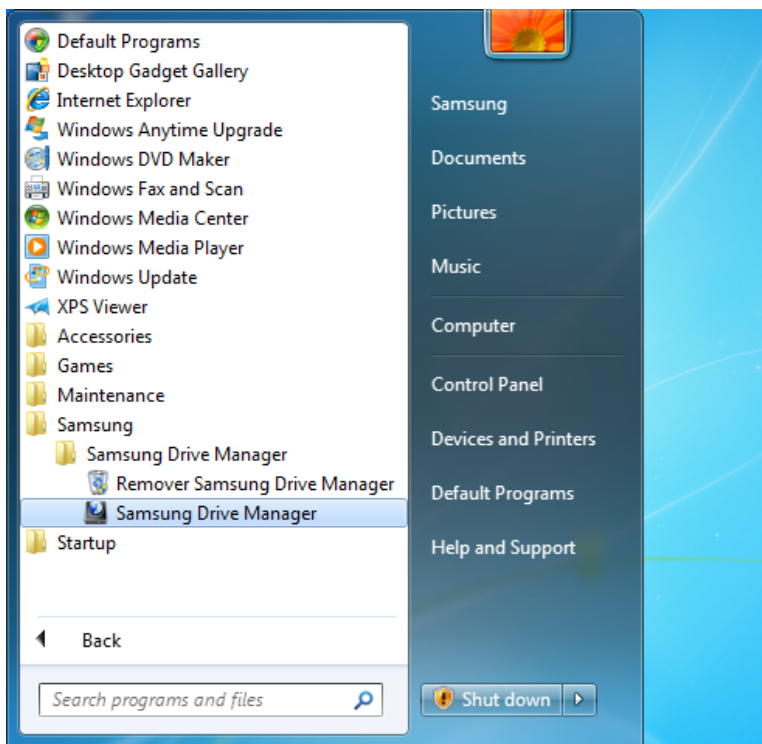


Select **Start** (from the Windows start menu) -> **All Programs** -> **Samsung** -> **Samsung Drive Manager** -> **Samsung Drive Manager**.

Samsung Drive Manager can also be run by clicking the shortcut icon on the desktop.

Chapter 1 Starting to Use Samsung Drive Manager

[Image] Samsung Drive Manager Execution Screen



Chapter 2 Using Samsung Drive Manager

2-1 Samsung Drive Manager

Samsung Drive Manager comprises Samsung AutoBackup (a personal backup solution), Samsung SecretZone, (a personal data protection solution), Samsung Secure Manager (a secure external hard disk management solution) and Samsung External Hard Drive management tools.

Execution

The program can be executed from the Samsung Drive Manager screen.

On the Samsung Drive Manager screen:

[Image] Samsung Drive Manager Screen



1. Click on the program you want to execute.
2. The clicked program is opened.

Safe Removal

The connected Samsung External Hard Drive is safely removed.



[[Safely Remove]] button

Note: Samsung AutoBackup and Samsung SecretZone are paused during a safe removal.

[Image] Safe Removal Screen



1. Select a Samsung External Hard Drive to remove.
2. Click [Safely Remove].

Unlocking the Secure Hard Disk

This option can be selected if a secure external hard disk is selected and locked.

Unlock a secure hard disk to view its stored data.



[[Unlock]] Secure Disk button

Note: Some models do not support this function. Then the unlock button appears in dimmed color.

2-2 Samsung AutoBackup

Samsung AutoBackup is a personal backup solution that can backup individual files on a local drive or network.

When backup sources are regularly backed up using Samsung AutoBackup, they are fully backed up only during the initial backup, and real-time backup (monitoring of backup data for auto-backup of changed data only) is performed subsequently for your convenience. Samsung AutoBackup is optimized for disk-based backup for fast restoration.

To perform backup using Samsung AutoBackup, a backup job must be created first. Using the created job, you can perform a backup, a restoration or a deletion and manage the backup device.

Backup

Click "Create Backup" on the Samsung AutoBackup screen to go to the Create New Job screen.

On the Samsung AutoBackup screen:

[Image] Initial Samsung AutoBackup Screen



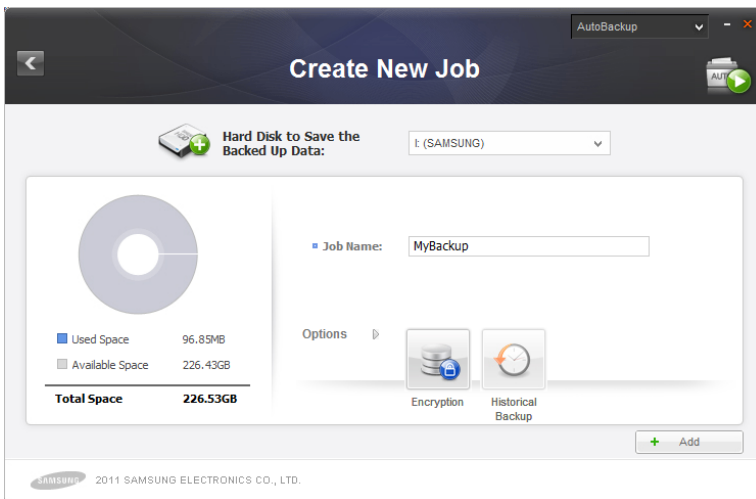
1. Click [+].

Create New Job

Select the hard disk to save backed up files and set the backup options.

2. Select "I: Drive (new volume)" in [Hard Disk to Save the Backed Up Data].
3. Enter "MyBackup" as the job name.
4. Click [Add].

[Image] Create New Job Screen



Note: Only a Samsung External Hard Drive can be selected as a hard disk to save backed up data.

Note: The above image and instructions are for reference only.

SafetyKey Setting

SafetyKey is an encrypted key for safe protection of backed up data. The key is used for "[[encrypted backup]]" and as a backup device password.

5. Enter the password in the [SafetyKey] field.
6. Re-enter the password in the [Confirm SafetyKey] field.
7. Enter a hint.
8. Click [OK].

[Image] SafetyKey Setting Screen



Set SafetyKey

SafetyKey is used to protect safely the backup device and the backed up data.

■ Set SafetyKey

■ Confirm SafetyKey:

■ Hint

Caution: Ensure you do not forget the SafetyKey.

OK

Note: The SafetyKey password must be between 6 to 15 characters.

Note: The SafetyKey can be set only once when creating a backup job, so do not forget your password.

When the SafetyKey is set, the screen where you can select backup sources is displayed.

[[Configure Backup Source]]

Backup sources and backup options can be set. Backup sources can be configured using [[General Settings]] and [[Advanced Settings]]. Frequently used files can be easily selected in [[General Settings]] and a browser can be used to search and select backup sources in [[Advanced Settings]].

9. Select [General Settings].
10. Select [Favorites].
11. Click [Backup].

The Backup screen is displayed automatically when [Backup] is clicked.

Chapter 2 Using Samsung Drive Manager

[Image] [[Configure Backup Source]] Screen



Backup

The progress of the backup is displayed for the selected sources.

Chapter 2 Using Samsung Drive Manager

[Image] Backup Progress Screen



Click [Done] when the backup is completed to return to the Samsung AutoBackup screen. Newly created jobs and data can be checked on the Samsung AutoBackup screen.

12. Click [Done].

Chapter 2 Using Samsung Drive Manager

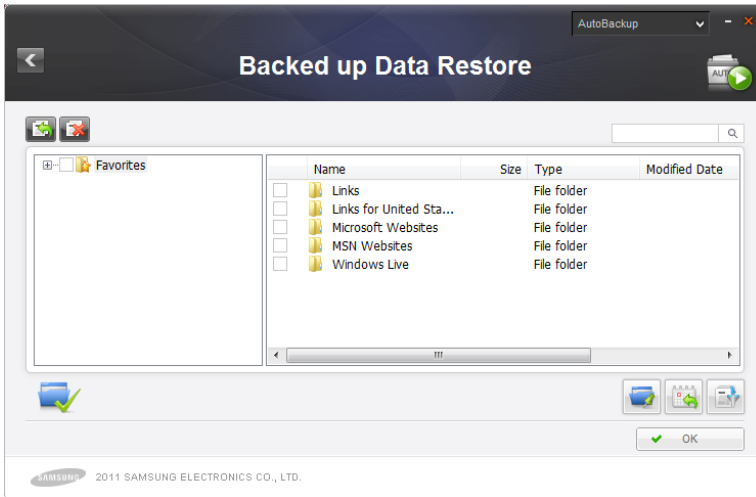
[Image] Auto Backup Complete Screen



Select [Backed up Data] in a job to view backed up files.

Chapter 2 Using Samsung Drive Manager

[Image] Backed up Data Screen



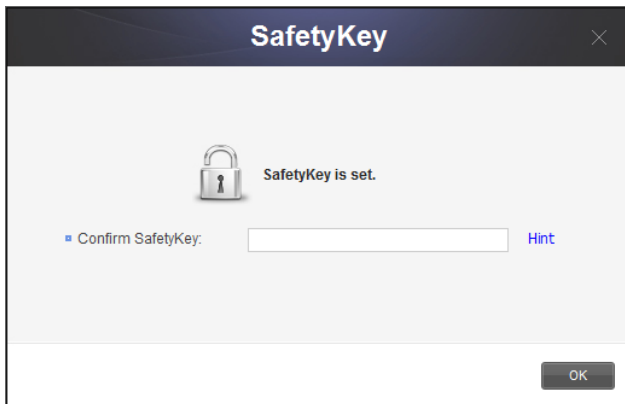
[[Restore]]

[[Backed up]] folders and files can be selected on the [[Backed up Data]] screen to be restored or deleted.

1. Select the [Favorites] folder.
2. Click [OK].

Your SafetyKey must be entered for security reasons before proceeding with the restoration. The Restore screen is automatically displayed.

[Image] SafetyKey Input Screen



[[Restore]]

The restoration progress is displayed.

[Image] Restore Screen



[[Delete]]

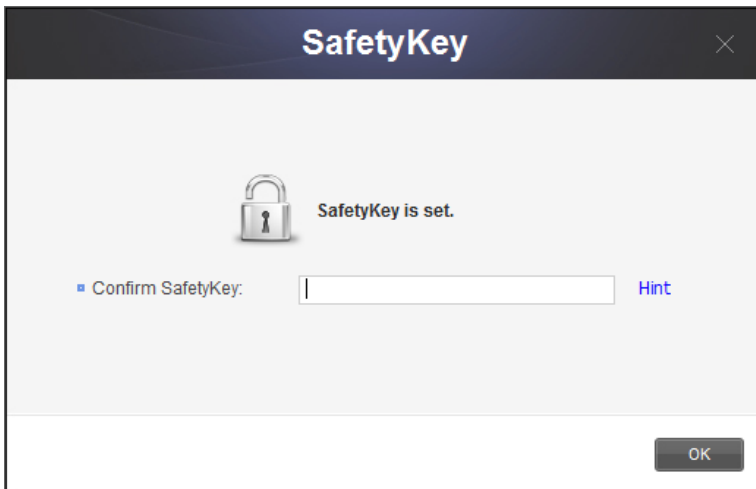
[[Backed up data]] that is no longer required can be deleted.

Select [Delete] on the Backed up Data screen, and then select a backup folder or file to delete.

1. Select the [Favorites] folder.
2. Click [OK].

Your SafetyKey must be entered for security reasons before proceeding with the deletion.

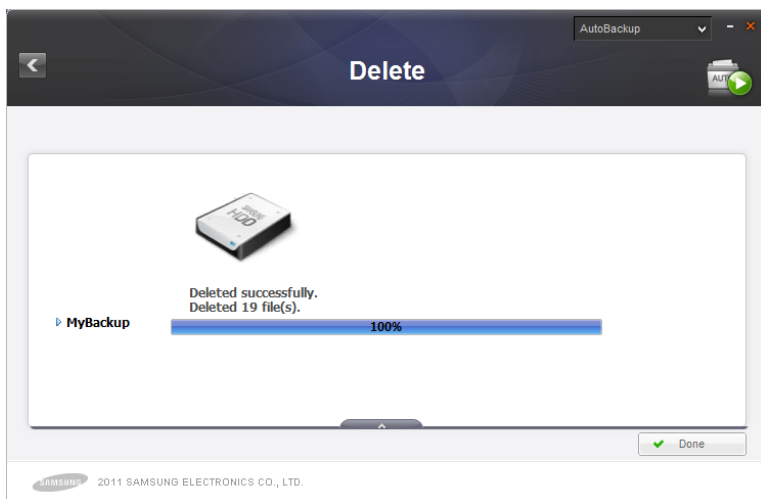
[Image] SafetyKey Confirmation Screen



[[Delete]]

The deletion progress is displayed.

[Image] Delete Screen



2-3 Samsung SecretZone

Samsung SecretZone is a personal information protection solution that lets you create and use an encrypted disk on your Samsung External Hard Drive.

By using Samsung SecretZone, you can safely and conveniently protect important, confidential and personal data.

A Secure Drive must be created before using Samsung SecretZone. A created Secure Drive can be used as your personal storage space.

Note: A Secure Drive can only be created on a Samsung External Hard Drive.

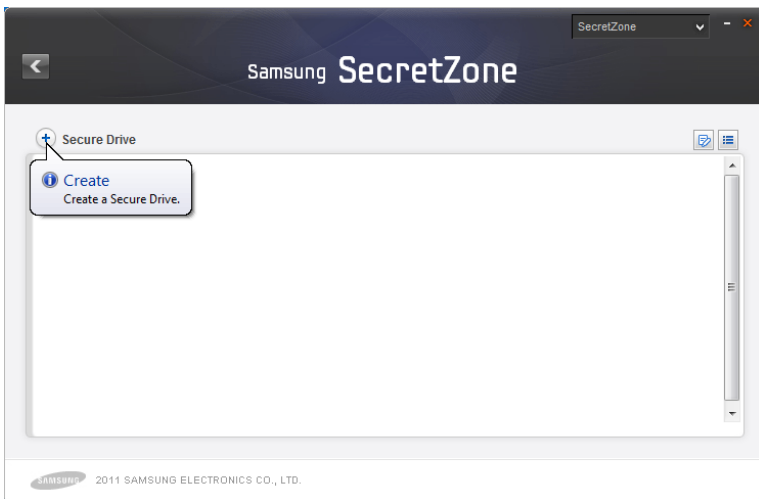
[[Create New Secure Drive]]

A Secure Drive must be created before using Samsung SecretZone.

Click [Secure Drive] on the initial Samsung SecretZone screen to open the [[Create New Secure Drive]] screen.

On the Samsung SecretZone screen:

[Image] Initial Samsung SecretZone Screen



1. Click [+].
2. The [[Create New Secure Drive]] screen is displayed.

After selecting a location to save the Secure Drive to, set the name and size of the Secure Drive and a drive to connect. The size of a Secure Drive can be set according to volume type.

Note: If the file system of a selected external hard disk is FAT, only a normal Secure Drive can be created.

[Image] [[Create New Secure Drive]] Screen



3. Select a [Secure Drive Path].
4. Enter "My Data" as the [Secure Drive Name].
5. Set [Secure Drive Size] to 10GB.
6. Set [Drive Letter to Connect] as "Z".
7. Click [Create].

A password setting screen for the Secure Drive is displayed when the above steps are completed.

[[Normal Secure Drive]] (default settings)

This option is used to create a Secure Drive of a specified size. The entire space on a Secure Drive can be used after being created.

[[Dynamic Secure Drive]]

This option is used to automatically expand the size of your Secure Drive according to the amount of space being used after setting a maximum Secure Drive size. A disk can be used efficiently by expanding the size according to the amount of space being used.

Note: When creating a [[normal Secure Drive]] on a FAT or FAT32-formatted [[Samsung External Hard Drive]], the size of the [[normal Secure Drive]] created initially is 10GB which is then expanded at the set size. The created 10GB Secure Drive can be used immediately.

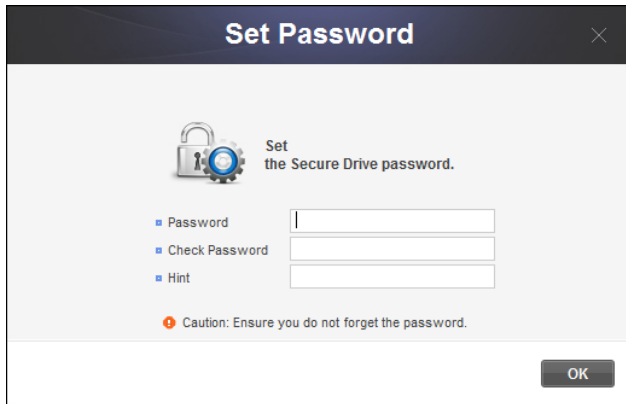
Note: A [[dynamic Secure Drive]] requires at least 20GB to be used.

Note: As a [[dynamic Secure Drive]] is expanded according to the amount of space being used, the size of the created Secure Drive connected is displayed as 20GB.

Note: The volume type of the [[secure hard drive]] cannot be changed after being created.

Note: The above image and instructions are for reference only.

[Image] Secure Drive Password Setting Screen



The image shows a 'Set Password' dialog box with a dark blue header bar containing the title 'Set Password' and a close button (X). The main area is light gray and contains a lock icon with a gear, the text 'Set the Secure Drive password.', and three input fields labeled 'Password', 'Check Password', and 'Hint'. Below the fields is a caution message: 'Caution: Ensure you do not forget the password.' and an 'OK' button at the bottom right.

8. Enter the [Password] field.
9. Enter the [Confirm Password] field.
10. Enter a [Hint].
11. Click [OK].

After the Secure Drive is created following the above steps, the initial screen (Secure Drive list) is displayed again.

[Image] Secure Drive Created Screen

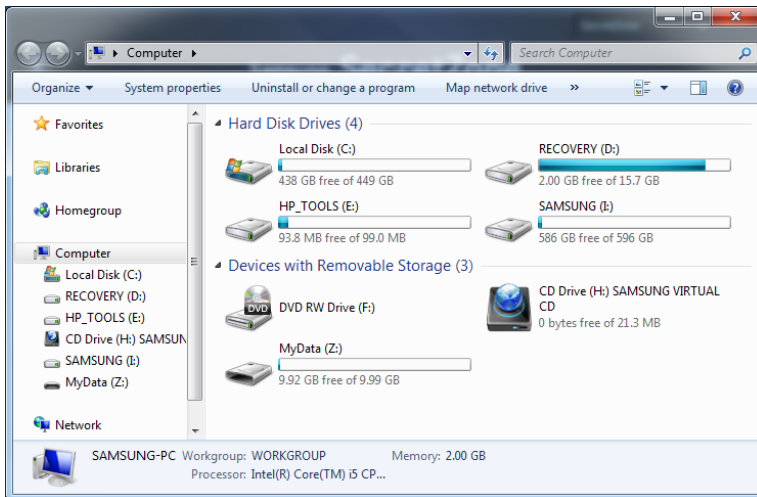


Note: The secure hard drive password must be between 6 to 15 characters.

Note: Do not lose your Secure Drive password as you cannot access your Secure Drive without it.

Chapter 2 Using Samsung Drive Manager

[Image] The Explorer Screen after a Secure Drive is Created



Connect Secure Drive

Connect Secure Drive lets you connect a created Secure Drive to Windows Explorer for use.

On the Samsung SecretZone screen:

[Image] Selecting a Secure Drive to Connect



1. Select a Secure Drive to connect from the list.
2. Click [Connect].

After checking the name of the selected Secure Drive, set the Secure Drive password, the connecting drive and the Secure Drive options.

[Image] Connect Secure Drive Screen



3. Enter the [Password].
4. Select the [Drive Letter to Connect].
5. Click [Connect].

Note: Select Secure Drive [[Hint]] to view a hint for setting the Secure Drive password.

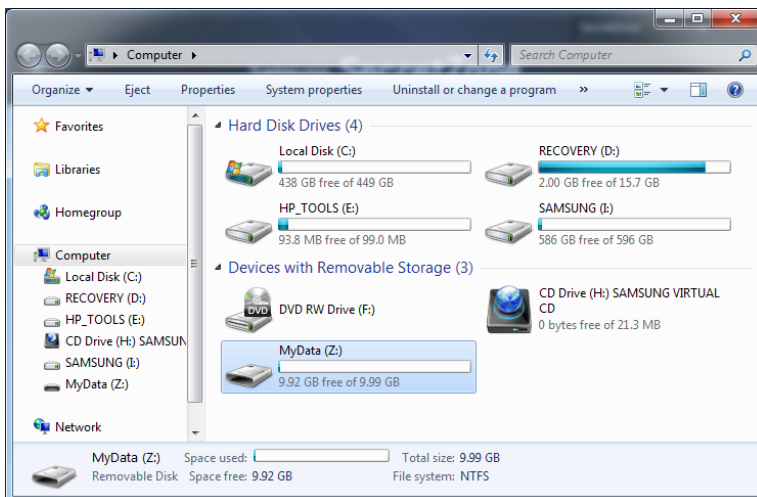
When connected, information on the connected Secure Drive can be viewed on the Samsung SecretZone Secure Drive list screen.

Chapter 2 Using Samsung Drive Manager

[Image] Secure Drive Connected Screen



[Image] Explorer Screen after Connection



Note: When "[[Auto Connection]]" is enabled, the Secure Drive may connect immediately after your Samsung External Hard Drive is reconnected. In such a case, wait a moment after connecting your Samsung External Hard Drive for the Secure Drive to connect.

Disconnect Secure Drive

Disconnect Secure Drive disconnects the Secure Drive connected to Windows Explorer.

Once your Secure Drive is disconnected, it cannot be accessed from Windows Explorer.

On the Samsung SecretZone screen:

[Image] Secure Drive to Disconnect Selection Screen



1. Select a Secure Drive to disconnect from the list.
2. Click [Disconnect].

[Image] Secure Drive Disconnected Screen



Disconnecting your Secure Drive can take some time if the drive is selected through Windows Explorer or if another application is accessing the drive.

Note: When disconnecting your Samsung External Hard Drive from your computer, always use "Safely Remove Hardware" to prevent loss of saved data and damage to the Secure Drive.

Note: An error may occur if the Secure Drive is disconnected immediately after copying and saving a large file or multiple files. In such a case, wait approximately 1 minute before disconnecting the Secure

Drive.

2-4 Samsung Secure Manager

Samsung Secure Manager is a Samsung secure hard disk management solution that encrypts and saves all data.

All data saved on a Samsung secure hard disk is encrypted to safely protect important data. Data storage areas can be locked to prevent loss or theft of data stored on your hard disk.

Note: Samsung Secure Manager cannot be used if your hard disk does not support the security function.

Using a Secure Hard Disk

A secure hard disk password must be set before using Samsung Secure Manager. The password ensures your hard disk can be used and managed more safely.

Password Setting

On the Samsung Secure Manager screen:

1. Select [Set Password] from the menu.

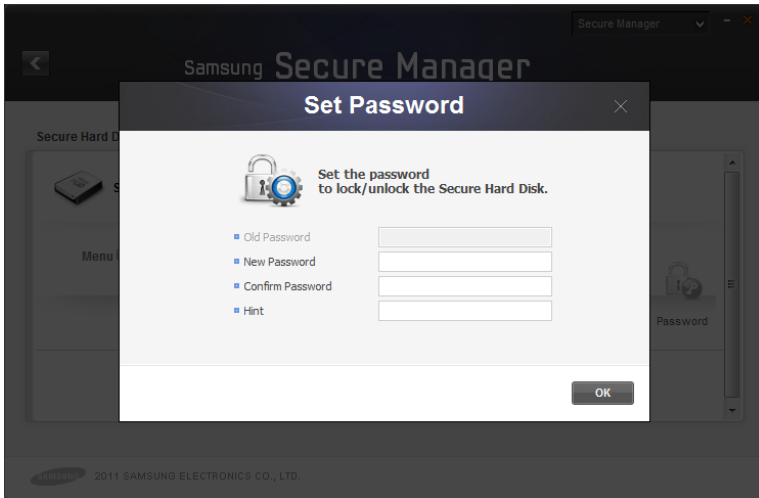
[Image] Samsung Secure Manager Screen



On the Set Password screen:

2. Complete the [New Password] and [Confirm Password] fields.
3. Enter a [Hint].
4. Click [OK].

[Image] Set Password Screen



The secure hard disk password is set.

The secure hard disk is locked when reconnected.

Note: The secure hard disk password must be between 6 to 15 characters.

Note: Do not forget your secure hard disk password.

Unlocking the Secure Hard Disk

When a password-locked secure hard disk is connected, the stored data is not displayed. Enter the correct password to

Chapter 2 Using Samsung Drive Manager

unlock the secure hard disk and view the hidden data.

On the Samsung Secure Manager screen:

1. Click [Unlock] on the menu.

[Image] Samsung Secure Manager Screen



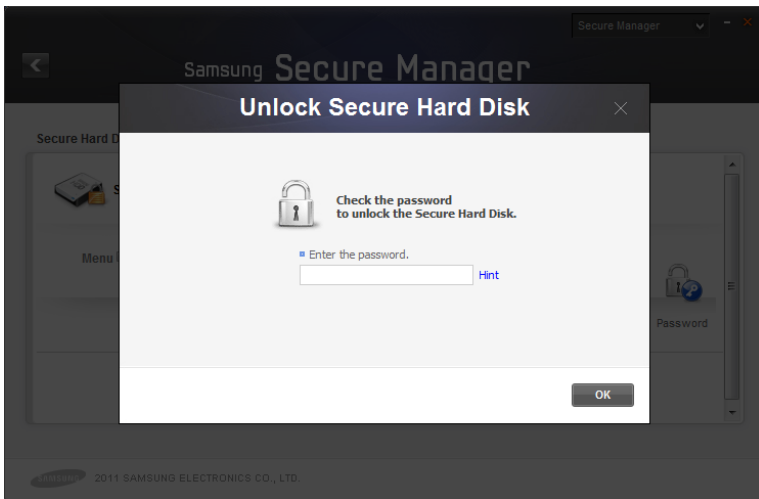
On the Unlock Secure Disk screen:

2. Enter the password.
3. Click [OK].

When the secure hard disk is unlocked, its data area is displayed and saved data can be viewed.

Chapter 2 Using Samsung Drive Manager

[Image] Unlock Secure Disk Screen



If Samsung Drive Manager is not installed, execute Secure Unlock_win.exe (saved on the CD area of the secure hard disk) to unlock the secure hard disk.

Execute Secure Unlock_mac.app when connecting to Mac OS after locking your External Hard Drive.

Refer to 2-8 Secure Unlock for further details on Secure Unlock.

2-5 Diagnostics

Your hard disk can be diagnosed to identify any issues.

Note: Make sure that your Samsung External Hard Drive does not disconnect from your computer during a diagnosis. The hard disk may be damaged if disconnected while a diagnosis is in progress.

Diagnostic Test

On the Samsung Drive Manager screen:

1. Click [Diagnostics].

[Image] Samsung Drive Manager Screen



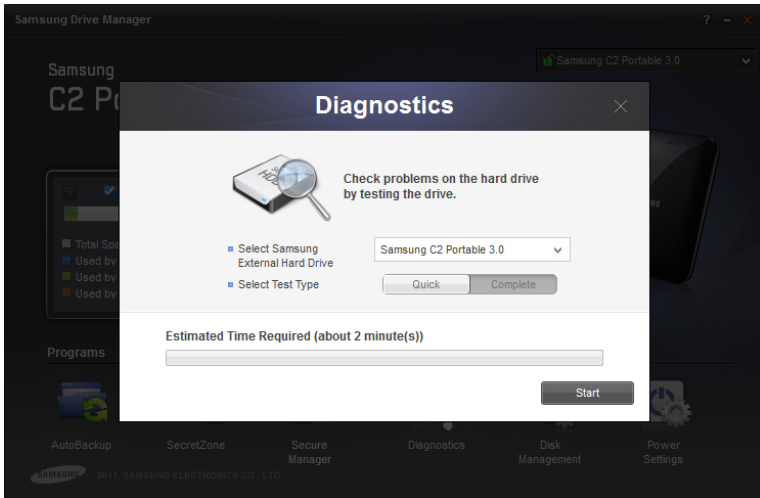
On the Diagnostics screen:

2. Select an external hard disk to diagnose.
3. Select [[Quick Drive Test]] or [[Complete Drive Test]].
4. Click [Start].

Note: A Complete Drive Test may take some time to finish. Check the expected test time before starting a drive test.

Chapter 2 Using Samsung Drive Manager

[Image] Diagnostics Screen



2-6 Disk Management

What is Disk Management?

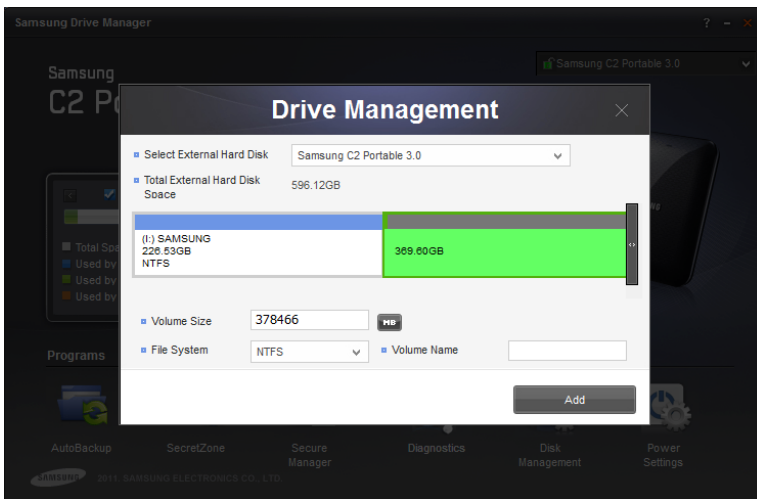
Disk Management Tools let you create, delete or format a data area (partition) on your Samsung External Hard Drive.

Adding a Data Area

This function enables unassigned space on a Samsung External Hard Drive to be used as data storage space.

A data area can be added as shown below.

[Image] Add a Data Area Screen



1. Select an unassigned area.
2. Enter the size of the data area to be created in Volume Size.
 - i. Move the slide bar to the size of the data area you want

Chapter 2 Using Samsung Drive Manager

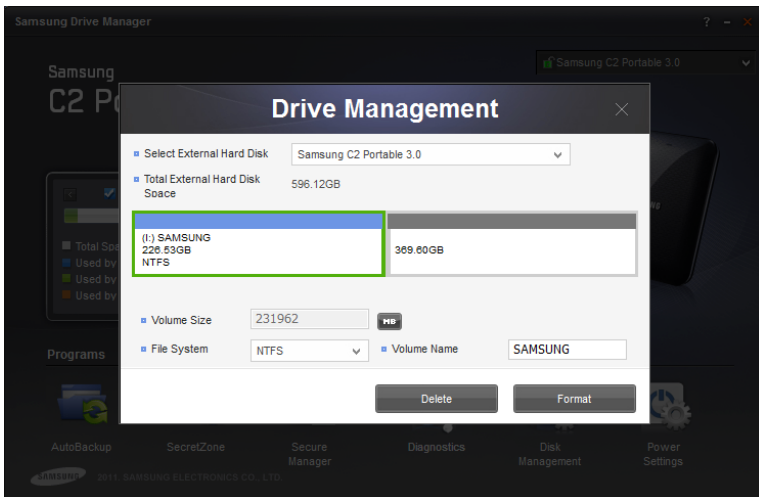
- to create.
- ii. Enter the size of the data area to create in Volume Size.
3. Select a file system and enter a volume name.
4. Click [Add].

Deleting a Data Area

This function is used to delete a data area that is no longer required.

A data area can be deleted as shown below.

[Image] Delete a Data Area Screen



1. Select a data area to delete.
2. Click [Delete].

Note: When a data area is deleted, all data saved in the data area is deleted and

cannot be restored.

Formatting a Data Area

This function is used to delete all data saved in a selected data area.

A data area can be formatted as shown below:

1. Select a data area to format.
2. Select a file system and enter a volume name.
3. Click [Format].

Note: When a data area is formatted, all data saved in the data area is deleted and cannot be restored.

2-7 Power Settings

What is drive power settings?

Energy consumption can be reduced through power settings for the hard disk.

The external hard disk is automatically put on stand-by when not used for the set period of time.

Note: This option may not be applied if OS power settings are applied.

Note: This function is not compatible with external hard disks that do not support power settings.

Power Settings

On the Samsung Drive Manager screen:

1. Click [Power Settings].

Chapter 2 Using Samsung Drive Manager

[Image] Samsung Drive Manager Screen



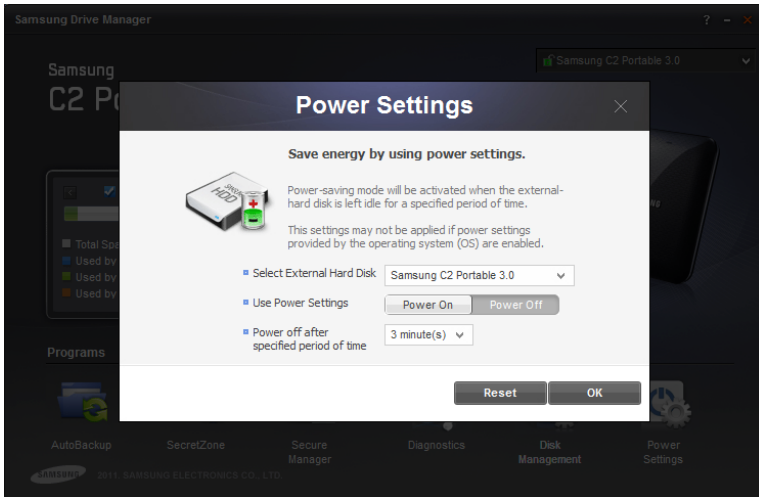
On the Power Settings screen:

2. Select an external hard disk to set.
3. Select Use Power Settings.
4. If [Power On] is selected:
Set the off time in [Power off after specified period of time].
5. Click [OK].

Information: The factory settings are [Use Power Settings - Power On] and [Power off after specified period of time - 5 minutes].

Chapter 2 Using Samsung Drive Manager

[Image] Power Settings Screen



2-8 Secure Unlock

Secure Unlock software can be used to unlock a Samsung secure hard disk connected to a computer that does not have Samsung Drive Manager installed.

Your secure hard disk can be unlocked easily using Secure Unlock without any additional installations.

Note: Secure Unlock cannot be used if your hard disk does not support the security function.

Using Secure Unlock

Secure Unlock can be executed using the following two methods.

1. Select "Run Samsung Drive Manager" on the window displayed when the secure external hard disk is connected to the computer.
2. Execute Secure Unlock_win.exe from the secure CD drive.

Chapter 2 Using Samsung Drive Manager

[Image] Samsung Secure Manager Unlock Screen



On the Samsung Secure Manager screen:

3. Enter the password.
4. Click [OK].

The secure hard disk is unlocked and its data area is displayed.

On a Mac OS, enter the password after executing Secure Unlock_mac.app.

Note: Secure Unlock is automatically closed if executed when the secure hard disk is unlocked.

2-9 Samsung Portable SecretZone

What is Samsung Portable SecretZone?

Samsung Portable SecretZone is a tool that allows you to connect and use a Secure Drive (used by Samsung SecretZone) on a PC that does not have Samsung Drive Manager installed.

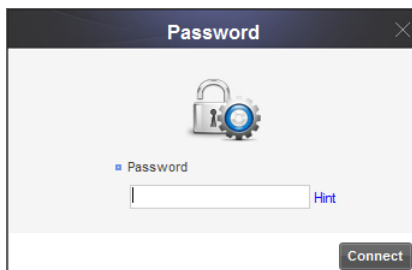
Your Secure Drive can be conveniently connected using Samsung Portable SecretZone without any additional installation.

Connection

On the Samsung Portable SecretZone screen:

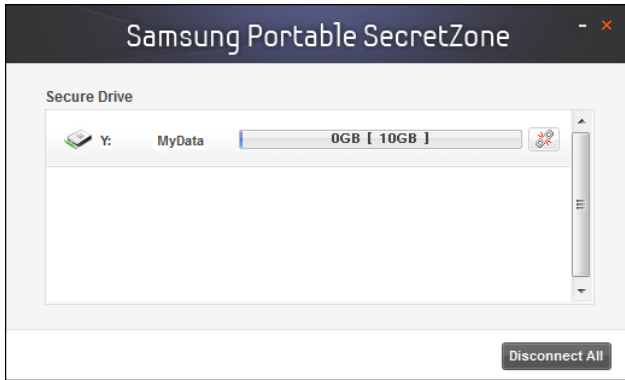
1. Select a Secure Drive to connect.
2. Click [Connect].

[Image] Enter Secure Drive Password Screen



3. Enter the [Password].
4. Click [OK].

[Image] Samsung Portable SecretZone Connection Screen

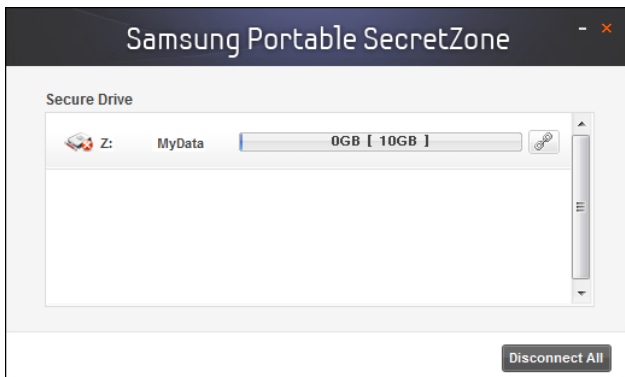


Disconnection

On the Samsung Portable SecretZone screen:

1. Select a Secure Drive to disconnect.
2. Click [Disconnect].

[Image] Samsung Portable SecretZone Disconnection Screen



Select [Disconnect All] to disconnect all connected Secure Drives.

Note: All connected Secure Drives are disconnected when Samsung Portable SecretZone is closed.

Chapter 3 Functions of Samsung Drive Manager

3-1 Samsung AutoBackup

Samsung AutoBackup Screen

The Samsung AutoBackup screen can be used to create, edit and delete backup jobs.

The following screen is displayed when a backup job is created.

[Image] Samsung AutoBackup Screen



Backup Job

The Create Backup screen is displayed and backup jobs can be created.

Sort

Chapter 3 Functions of Samsung Drive Manager

This function is used to sort created jobs for easy viewing. Jobs can be sorted by job name, file size, and errors in the result of a job.

Backup Job List

The Backup Job List contains information such as created backup jobs, backup job status, backup size and settings.

Backup Job Status

- **Success**

This message is displayed if the most recent backup job was successful.

[Image] Samsung AutoBackup Job Successful Screen



- **Error**

This message is displayed if there was an error in the most recent backup job. An error message is displayed along with an error icon. Click on the error message to view information on how to fix the error.

Chapter 3 Functions of Samsung Drive Manager

[Image] Samsung AutoBackup Job Error Screen



- **Read Only**

This icon is displayed for backup jobs that were created on other computers. Read-only jobs cannot be backed up. They can only be restored or deleted.

[Image] Samsung AutoBackup Read Only Screen



Note: When the OS or Samsung Drive Manager is re-installed on the same computer, the existing backup jobs become read-only jobs.

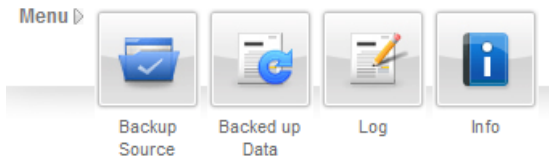
[[Menu]]

- **[[Backup Source]]**
Backup sources can be selected and backup can be performed.
- **[[Backed up Data]]**
Backed up data can be viewed, restored and deleted.
- **[[Log]]**
A log of backup, restoration and deletion events can be viewed.
- **[[Info]]**

Chapter 3 Functions of Samsung Drive Manager

The number, size and type of files backed up on a backup device can be viewed.

[Image] Menu



[[Options]]

- **[[Encrypted Backup]]**

If Encrypted Backup is set, all files backed up are encrypted and saved. Set this option to encrypt backed up data to ensure additional storage protection.

- **[[Historical Backup]]**

This backup option maintains the number of backup files set by the user. It does not allow the deletion of existing backup files when a backup is performed again after backup sources have changed.
Set this option to save source files at various times.

[Image] Options



Other Functions

Click on the arrow at the top right of the job item to display

Chapter 3 Functions of Samsung Drive Manager

the button to edit and delete jobs.

- **Edit**

Options for a selected job are edited. Options set when a backup job was created can be edited.

- **Delete**

A selected job is deleted. All backed up files and data are deleted.

[Image] Other Functions



Note: Backed up files and data cannot be restored after being deleted.

Functions at the Top of the Samsung AutoBackup Screen

Previous Page

The previous page is displayed. If the current screen is the Samsung AutoBackup screen, the Samsung Drive Manager screen is displayed.

Quick Switch

This option is only displayed when backup, restoration or deletion is in progress. If selected, the progress of backup, restoration or deletion is displayed.

Real-Time Backup

Real-Time Backup can be enabled or disabled. If enabled, real-time backup is performed when files or folders are added to (or edited in) backup sources.

All backup processes in progress are stopped if Real-Time Backup is disabled.

[Image] Samsung AutoBackup Screen



Note: If Real-Time Backup is disabled, all backup processes in progress are stopped and real-time backup will no longer be performed.

[[Create New Job]]

New backup jobs can be created and backup job options can be set.

[[Hard Disk to Save the Backed Up Data]]

The hard disk where backup files and data will be saved is set. A backup device can be created on a Samsung External Hard Drive only.

Hard Disk Size Information

The total space, used space and free space of the selected hard disk are displayed as a diagram.

[[Job Name]]

Job names can be set to identify different backup jobs.

[[Options]]

Encrypted Backup or Historical Backup can be set.

Note: [[Encrypted Backup]] is a function that encrypts and backs up data. It can be used after restoring data to be backed up using Samsung AutoBackup. Data cannot be used through the Explorer without restoring first. Data cannot be restored if contents are moved or edited.

- **[[Encrypted Backup]]**

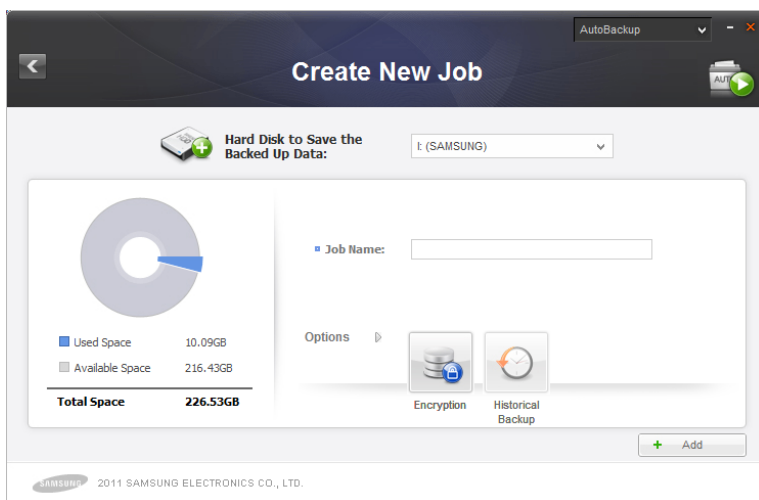
Encrypted Backup can be enabled or disabled.

- **[[Historical Backup]]**

Historical Backup can be enabled or disabled.

Chapter 3 Functions of Samsung Drive Manager

[Image] Create New Job Screen



[[Configure Backup Source]]

Select files or folders to be backed up. Backup sources can be configured using the [[General Settings]] or can be customized using the [[Advanced Settings]].

[[General Settings]]

Conveniently select frequently used files with this function. Microsoft Office products, music and video files can be selected.

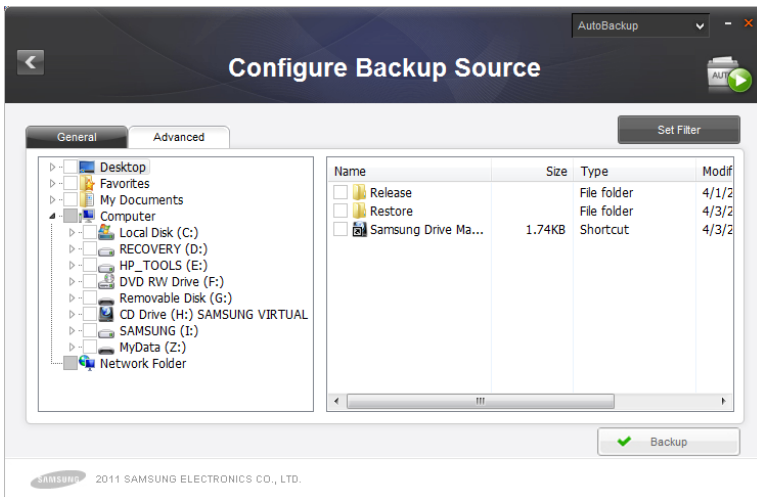
[Image] General Settings Screen



[[Advanced Settings]]

Select and search backup sources using a browser. Set Filter can be used to set the types of files to exclude from selected files and folders or the types of files to back up.

[Image] Advanced Settings Screen



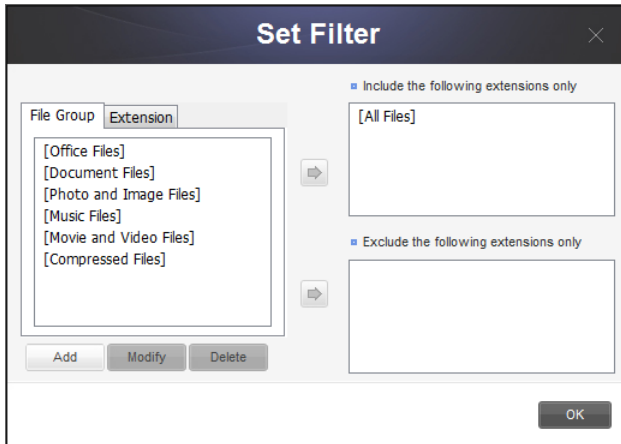
- **[[Set Filter]]**

Types of files to back up or exclude from backup can be selected on the Set Filter screen. By default, all types of files will be backed up.

1. Set files to back up and to exclude from backup.
2. Click [OK] after settings are made.

Chapter 3 Functions of Samsung Drive Manager

[Image] [[Set Filter]] Screen



File filter can be set by File Group or Extension. In File Group, preset or customized file groups can be used.

Click [Backup] to start backup of selected backup sources.

[[Backed up Data]]

[[Backed up data]] can be viewed. [[Backed up data]] can be restored, deleted or searched.

[[Restore]]

Backed up files or folders are restored.

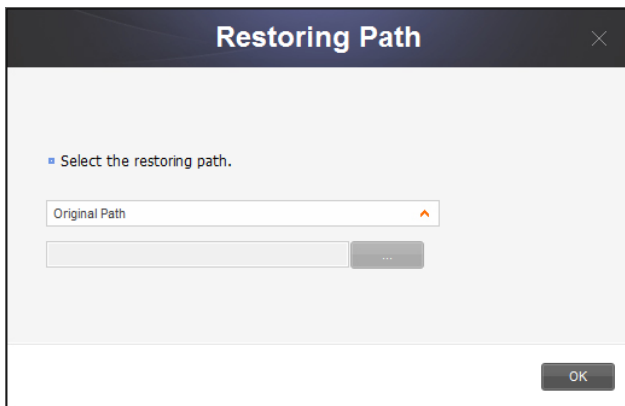
Set the files or folders to restore and Restore Options to start restoration.

Click [OK] to start restoration after entering SafetyKey.

- **[[Restoration Path]] Settings**

The original path of backup files or a new path can be set. By default, the original path of backup files will be used as the [[restoration Path]].

[Image] [[Restoration Path]] Selection Screen

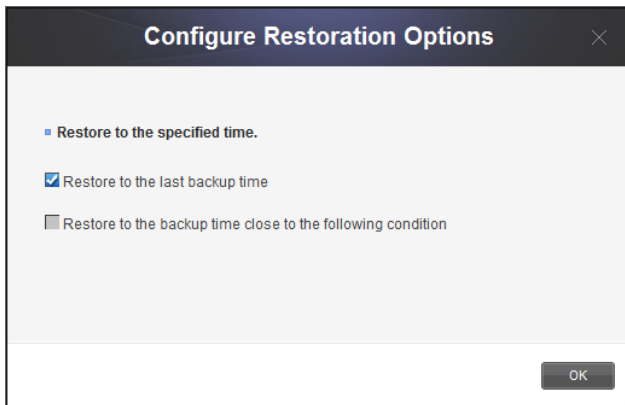


- **[[Restoration Point]] Settings**

This function is used to restore [[backed up data]] to a specified time when Historical Backup is used.

Only selected files or folders corresponding to the set time can be restored. Most recently backed up file characteristics or dates can be set. By default, the most recently backed up file properties will be applied.

[Image] [[Configure Restoration Options]] Screen

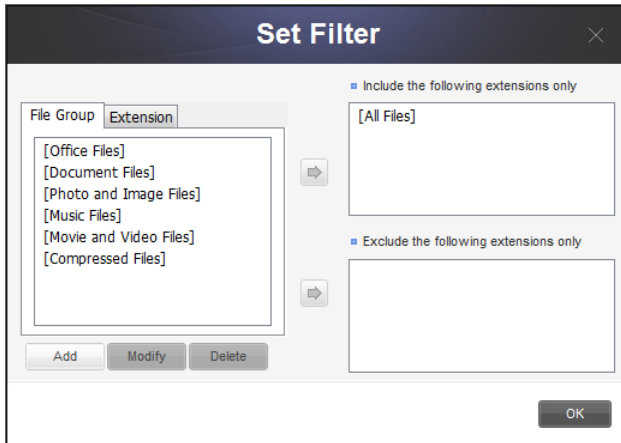


Chapter 3 Functions of Samsung Drive Manager

• Set Filter

Of selected files or folders, file types to restore or exclude from restoration can be set. By default, all file types will be applied.

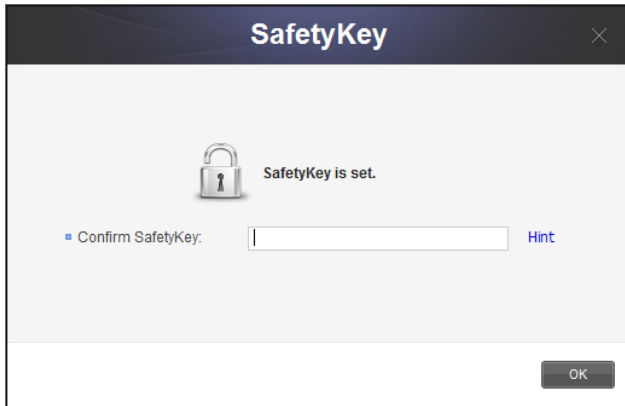
[Image] [[Set Filter]] Screen



• Restore

1. Click [Restore].
2. From [[backed up data]], select files or folders to restore.
3. Configure Restoration Options
4. Click [OK].
5. Enter SafetyKey.

[Image] SafetyKey Input Screen



6. Click [OK].

Restoring [[backed up data]] will be started according to the configured settings.

[[Delete]]

This function is used to delete backed up data that is no longer required.

Click [Delete] to start deletion.

Select files or folders to delete and configure Delete Options to start deletion.

Click [OK] to delete the selected backed up data after entering SafetyKey.

• Set Filter

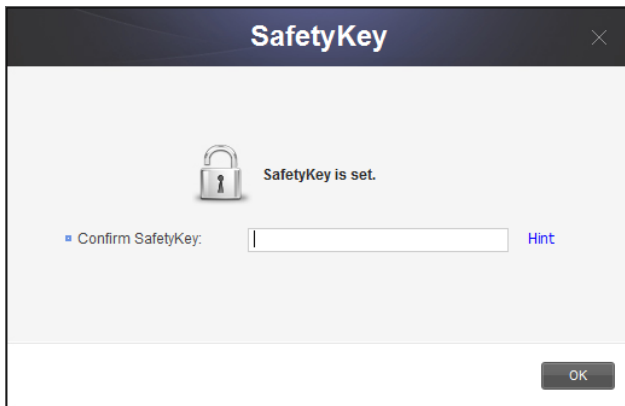
Of selected files or folders, file types to delete or exclude from deletion can be set. By default, all file types will be applied.

•[[Delete]]

Chapter 3 Functions of Samsung Drive Manager

1. Click [Delete].
2. Select the files or folders to delete from the backed up data.
3. Click [OK].
4. Enter SafetyKey.

[Image] SafetyKey Input Screen



5. Click [OK].

Deleting [[backed up data]] will be started according to the configured settings.

Note: Deleted [[backed up data]] cannot be restored.

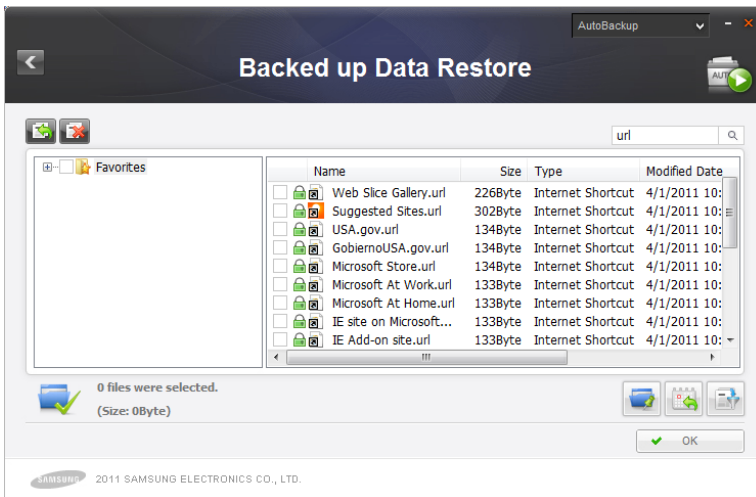
Chapter 3 Functions of Samsung Drive Manager

Search

This function is used to search [[backed up data]].

1. Enter the file name to search in the [Search] field.
2. Click [Search].













[Image] Backed up Data Screen





Searched files can be restored or deleted.

Backup List Icon

The Backup List shows the location of backed up files and the status of backed up folders and files as icons. Icon descriptions are as follows.

	Backed up file exists but without a backup source
	Backed up file is identical to backup source
	Backed up file is different from backup source
	Backed up folder is identical to backup source
	Backed up folder exists but without a backup source
	File was encrypted and backed up and no backup source exists
	File was encrypted and backed up and is identical to backup source
	File was encrypted and backed up and is different from backup source
	File was historically backed up and no backup source exists
	File was historically backed up and is identical to backup source
	File was historically backed up and is different from backup source
	File was encrypted and historically backed up and no backup source exists

Chapter 3 Functions of Samsung Drive Manager

	File was encrypted and historically backed up and is identical to backup source
	File was encrypted and historically backed up and is different from backup source

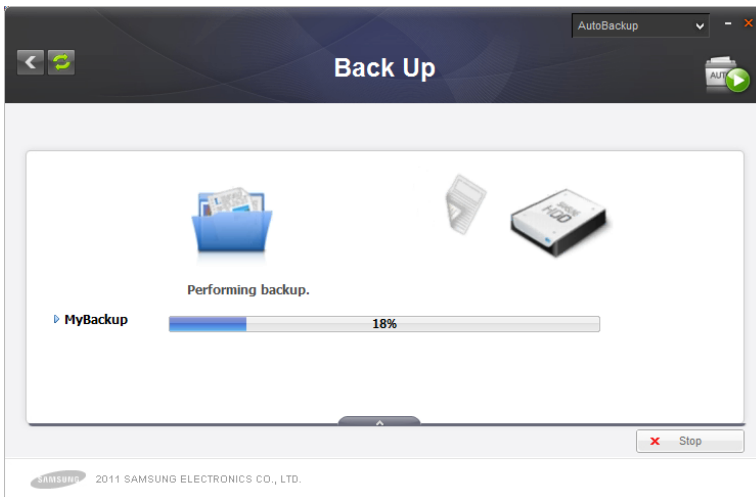
Backup, Restoration and Deletion Progress

This screen shows the progress of backup, restoration or deletion. The initial default screen provides summarized data. Click on the button at the bottom to view further details.

- **Default Screen**

1. Job progress diagram
 2. Progress bar
 3. Size of file being processed
- The above are shown on the default screen.

[Image] Backup Progress Screen

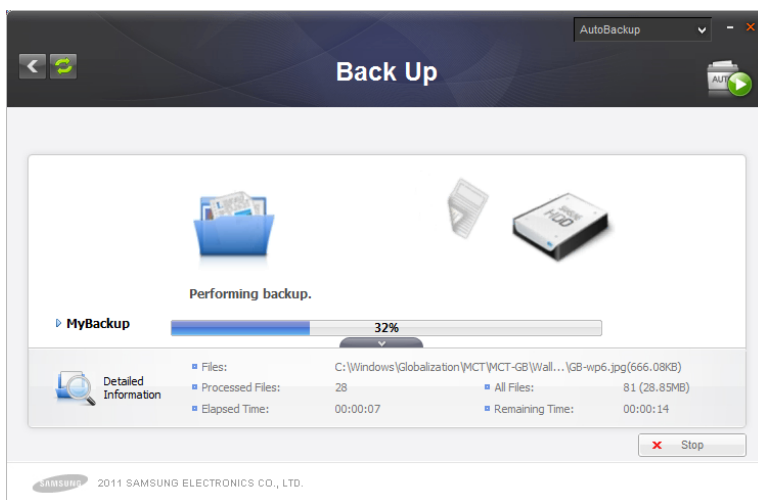


- **Further Details**

File names, number of files and total number of files are displayed.

Chapter 3 Functions of Samsung Drive Manager

[Image] Backup Job Details Screen









[[Log]]

Outcome of backup, restoration or deletion is displayed.

Log List

A log list is displayed on the left side of the screen.

- **Result**
Success/Error icon is displayed to notify job result.
- **Job Type**
Backup/Restore/Delete icon is displayed.
- **Job Completion Date/Time**
The date and time of job completion are displayed.

	Job successful
	Job error encountered
	Manual backup
	Real-time backup
	Restore
	Delete

Job Information

Detailed job information is displayed.

- **File Information**

Total number of job files and number of successful/failed job files are displayed.

- **Time Information**

Date and time of job start/completion are displayed.

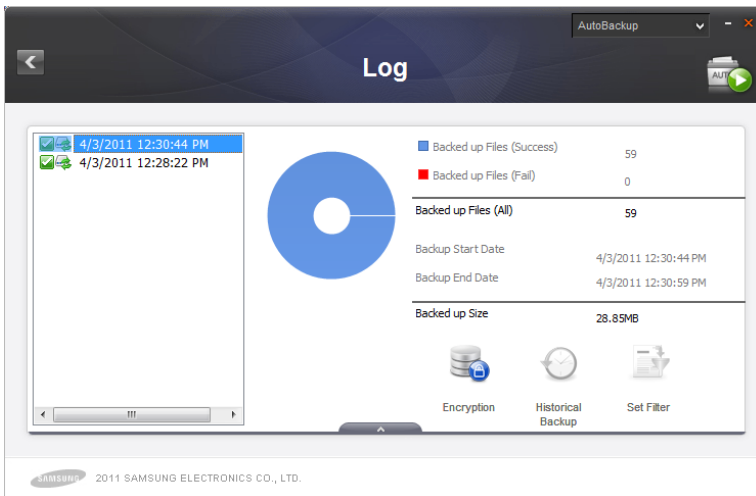
- **Size Information**

Total size of a job is displayed.

- **Settings Information**

Settings applied to a completed job are displayed.

[Image] Log Screen

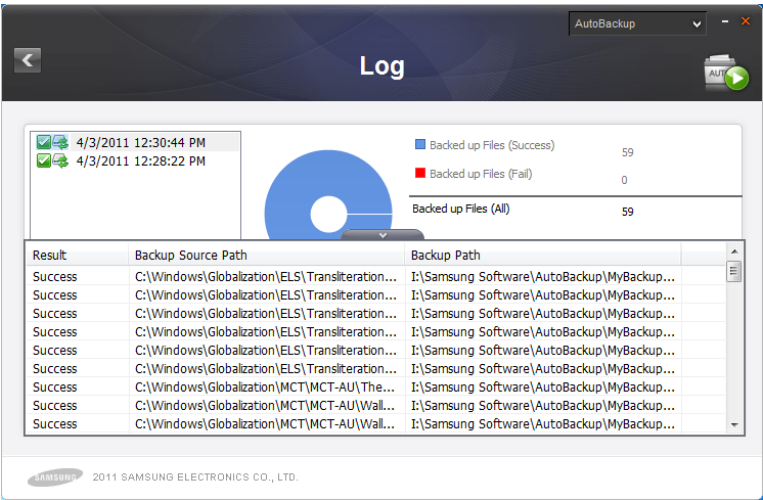


Detailed Log

Click on the button at the bottom to view a detailed log. Job success/failure, error information, file location and restored location are displayed.

Chapter 3 Functions of Samsung Drive Manager

[Image] Detailed Log Screen



[[Info]]

Summarized backup information on a job and recent backup job results are displayed.

- **[[Job Name]]**
The name of a currently selected job is displayed.
- **[[Backed up Files]]**
Total number and size of backed up files for the current job are displayed.
- **[[Backup Status]]**
Recent backup results are displayed.
- **[[Backup Composition]]**

Size and proportion of frequently used backed up files will be displayed by type using a chart.

[Image] [[Backup Information]] Screen



Backup Error

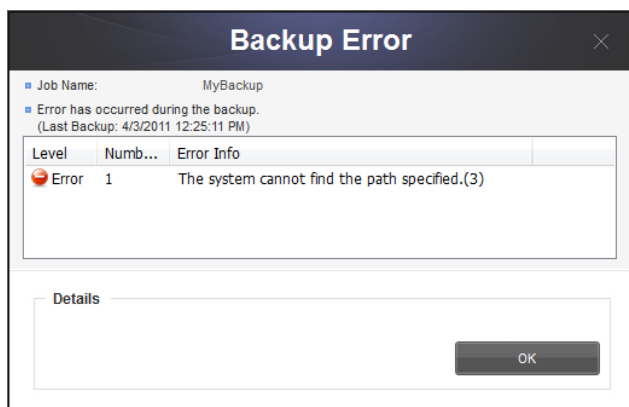
If recent backup results include an error, click [Error Correction] displayed within a job for correction.

- **[[Job Name]]**
The name of a currently selected job is displayed.
- **[[Backup Status]]**
The status and date of a backup error can be viewed.
- **Error List**
Number of files and details of errors are displayed by error type.
- **[[Details]]**
Detailed information is displayed for frequent errors to provide an effective solution.
- **[[Error Correction]]**
Select "[[Error Correction]]" to correct errors that can be corrected by Samsung AutoBackup. Errors cannot be corrected if your system environment is prone to errors.

Information: Refer to error details to properly correct an error.

Chapter 3 Functions of Samsung Drive Manager

[Image] Backup Error Screen



3-2 Samsung SecretZone

What is Samsung SecretZone?

Samsung SecretZone is a personal information protection solution that lets you create and use an encrypted disk on your Samsung External Hard Drive.

By using Samsung SecretZone, you can safely and conveniently protect important, confidential and personal data.

[Image] Samsung SecretZone Screen



Functions of Samsung SecretZone

The following functions are used to manage your [[Secure Drive]].

[[Connect/Disconnect Secure Drive]]

[[Connect/Disconnect Secure Drive]] is used to connect or disconnect a Secure Drive and Windows Explorer.

Note: This function cannot be used unless a Secure Drive is created.

Delete Secure Drive

Delete Secure Drive is used to delete a Secure Drive from the Samsung SecretZone list and remove the Secure Drive permanently.

Check the data stored on a Secure Drive before deleting the Secure Drive.

On the Samsung SecretZone screen:

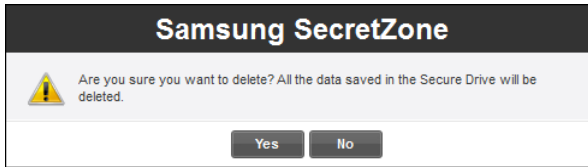
[Image] Delete Secure Drive Screen



1. After selecting a drive from the list, click on the button at the top right of the screen.
2. Click [Delete].

Chapter 3 Functions of Samsung Drive Manager

[Image] Secure Drive Deletion Confirmation Message



3. After checking the data to be deleted,
4. Click [OK].

Note: All data stored on a deleted Secure Drive is permanently deleted and cannot be restored. Confirm the contents you want to delete on a Secure Drive before deleting the drive.

Set Secure Drive

If there is insufficient free space on a Secure Drive that is in use, the size of the Secure Drive can be expanded and the options and password can be changed. Data stored on a Secure Drive will not be altered even if the drive is expanded or the options or password is changed.

On the Samsung SecretZone screen:

[Image] Secure Drive Selection Screen



1. Select a Secure Drive to change the settings for.
 2. Click [Settings].
- or
3. Click on the button at the top right and then click [Set Options].
 4. The Set Secure Drive screen is displayed.

After checking the location and name of the selected Secure

Chapter 3 Functions of Samsung Drive Manager

Drive, set the options and Secure Drive size to change.

[Image] Set Secure Drive Screen



To change the password:

5. Click [Password].

[[Auto Connection]]

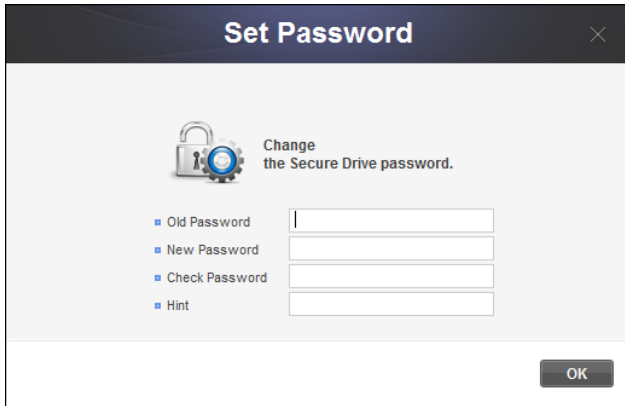
Auto Connection connects your Secure Drive automatically without password confirmation when a Samsung External Hard Drive is connected.

[[Auto-Disconnection Timeout]]

Auto-Disconnection Timeout automatically disconnects your Secure Drive if it is not used for the set time.

Chapter 3 Functions of Samsung Drive Manager

[Image] Secure Drive Password Setting Screen



The image shows a 'Set Password' dialog box with a dark blue header and a close button (X) in the top right corner. Below the header, there is a lock icon and the text 'Change the Secure Drive password.' To the left of the input fields, there are four labels: 'Old Password', 'New Password', 'Check Password', and 'Hint', each preceded by a small blue square icon. To the right of these labels are four corresponding text input fields. At the bottom right of the dialog box is an 'OK' button.

6. Enter the [Old Password] field.
7. Enter the [Password] field.
8. Enter the [Confirm Password] field.
9. Enter a [Hint].
10. Click [OK].

Note: The password must be between 6 to 15 characters.

Note: You cannot use the Secure Drive functions if you forget your password.

Note: Secure Drive settings can be made when the Secure Drive is connected.

Changing the Secure Drive size or options:

Chapter 3 Functions of Samsung Drive Manager

11. Set the [Secure Drive Size] to expand to.
12. Change [Secure Drive Settings].
13. Click [OK].

[Image] Secure Drive Setting Progress Screen



The progress of saving settings is displayed when [OK] is clicked.

When setting is completed, the changed Secure Drive settings can be viewed on the Samsung SecretZone Secure Drive list screen.

[Image] Changed Secure Drive Screen

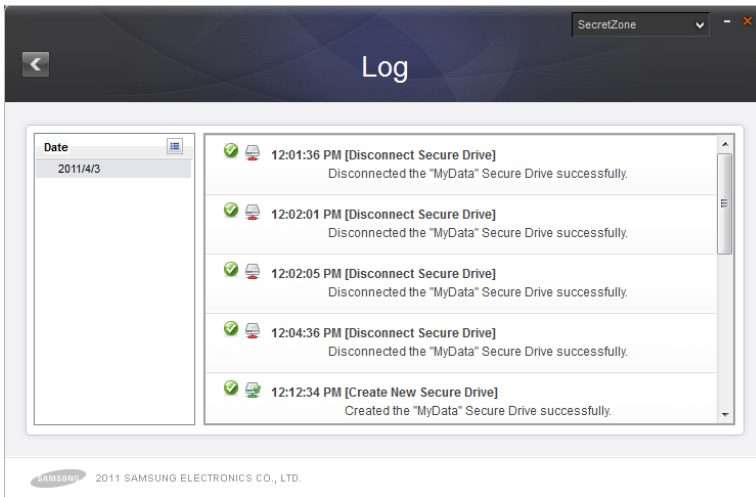


Note: Do not disconnect the Samsung External Hard Drive from the computer when settings are being saved. The Secure Drive can become damaged if the hard disk is disconnected while settings are being saved.

Secure Drive Log

A Secure Drive log shows Secure Drive creation, connection, disconnection and settings.

[Image] Secure Drive Log Screen



3-3 Samsung Secure Manager

What is Samsung Secure Manager?

Samsung Secure Manager is a management tool used to configure and check secure hard disk functions. Samsung Secure Manager can be used to [[lock/unlock]] data areas and conveniently change various secure hard disk settings including Auto Unlock and Auto Lock Timeout.

[Image] Samsung Secure Manager Screen



Functions of Samsung Secure Manager

The following functions are used for secure hard disk management.

[[Lock/Unlock]]

This function is used to lock and unlock your secure hard disk.

The data area of a locked secure hard disk is not displayed and saved data cannot be used.

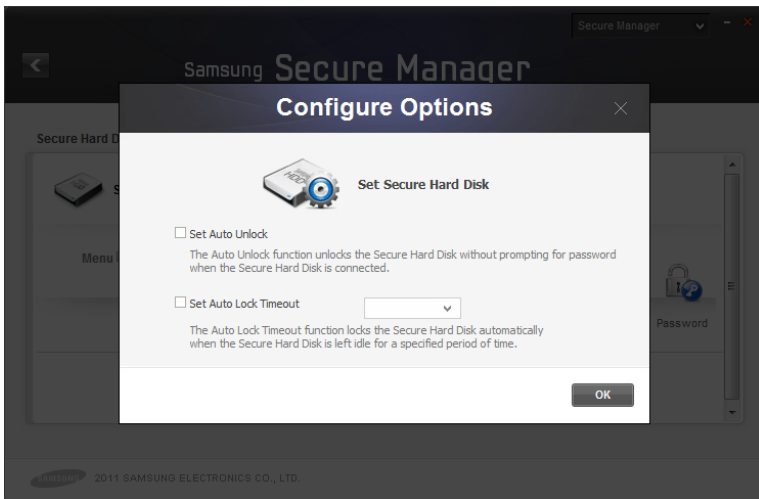
The data area of an unlocked secure hard disk is displayed and saved data can be used.

Note: [[Lock/Unlock]] cannot be used unless the password is set.

[[Settings]]

Click this button to view and set the functions required to conveniently use your secure hard disk.

[Image] Settings Screen



[[Set Auto Unlock]]

Auto Unlock automatically unlocks your secure hard disk when connected without password confirmation.

[[Auto-Lock Timeout]]

Auto-Lock Timeout automatically locks your secure hard disk if not used for the set time.

Note: [[Auto Unlock]] is only applied to computers it is set on.

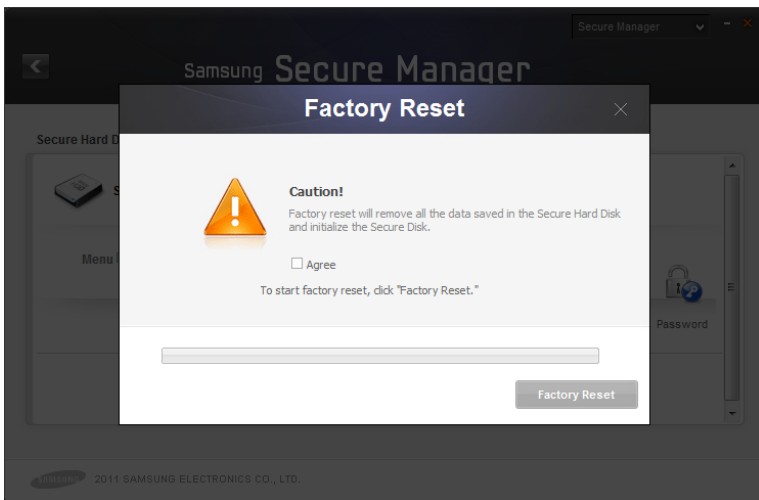
Note: The set functions are applied when the secure hard disk is reconnected.

[[Factory Reset]]

This function deletes all data stored on your secure hard disk and restores the default security settings.

Note: All stored data is deleted and cannot be restored after factory reset.

[Image] [[Factory Reset]] Screen



Set/Change Password

The secure hard disk password is set or changed.

[[Do Not Use Password]]

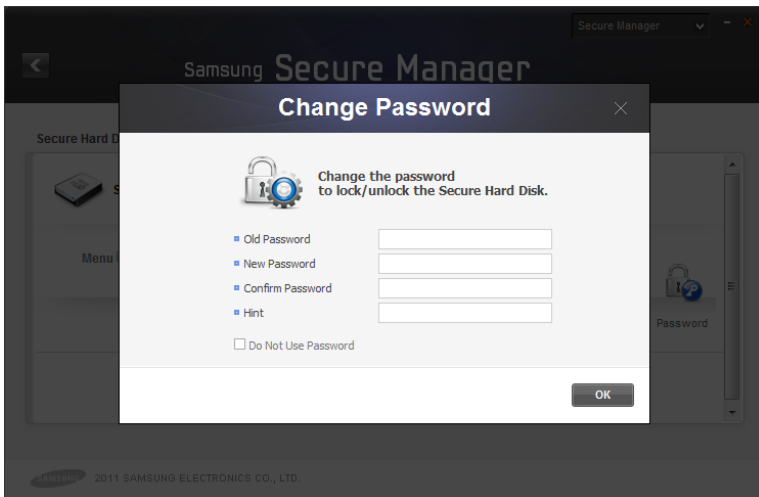
[Do Not Use Password] removes the set password.

Note: The password must be between 6 to 15

characters.

Note: Secure hard disk functions cannot be used or configured if no password is set.

[Image] Change Password Screen

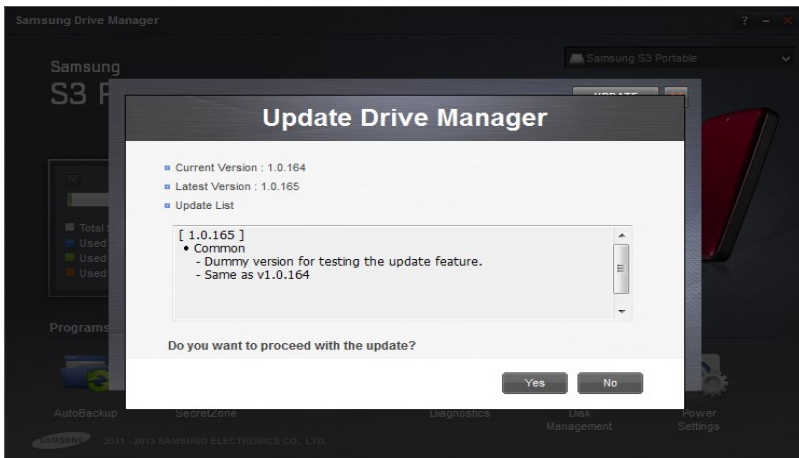


3-4 Samsung Drive Manager Update

What is Samsung Drive Manager Update?

Samsung Drive Manager Update is the feature to keep software up-to-date version. It prevents software problems and solves them. It also provides the chance to use enhanced functions for customers.

[Image] Samsung Drive Manager Update Window



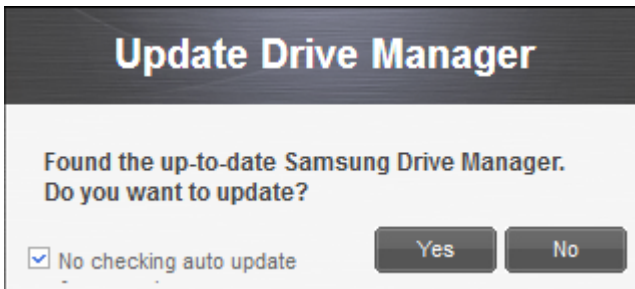
Using Samsung Drive Manager Update

Samsung Drive Manager Update shows the latest version notice periodically if the version of Drive Manager which you use is older than the up-to-date version in the update server.

When you execute Samsung Drive Manager, it will check the latest version and show you the update notice window automatically.

If the version of Drive Manager which you use is the latest, the update notice window will not appear.

[Image] Samsung Drive Manager Update Notice Window



To update Drive Manager to the latest version:

1. Click "Yes" button in the update notice window (If you want to update later, click "No" button)

Inform, : If you check “No checking auto update for a week” in the update notice window, Samsung Drive Manager will not check the latest version for a week.

Inform. : You can invoke the update feature manually in the about window.

[Image] Samsung Drive Manager About Window.



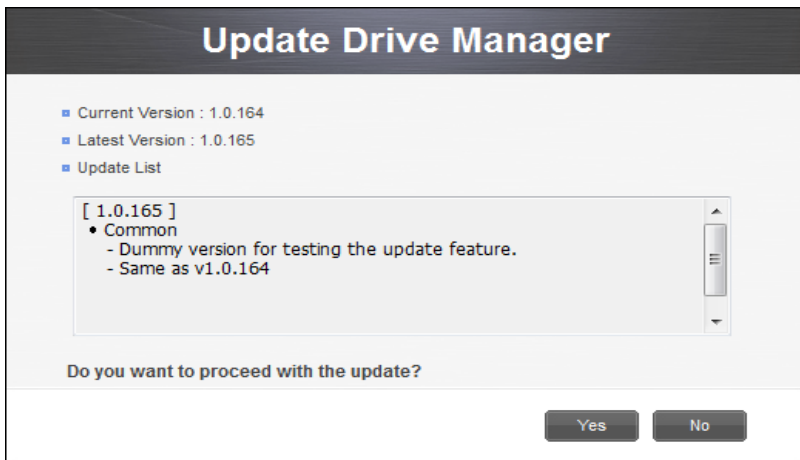
Chapter 3 Functions of Samsung Drive Manager

If you click "Yes" button and proceed with updating, you can see the update list that consists of the contents enhanced or updated at the up-to-date version in the update information window.

In the update information window:

2. Click "Yes" button.

[Image] Samsung Drive Manager Update Information Window



If you click "Yes", the download window will appear and it will start to download. And then the update installation will go on automatically.

WARNING: You may reboot the computer after installing the latest version.

Terminology

The following is the terminology you should become familiar with to use Samsung Drive Manager.

What is backup?

Backup is the act of safely storing data on a data storage device such as a hard disk.

What is [[encrypted backup]]?

[[Encrypted backup]] is the act of encrypting and safely storing data on a data storage device such as a hard disk.

What is a [[historical backup]]?

When backup sources change multiple times as backups are performed regularly, [[historical backup]] backs up changed files along with the information about the changed files among the backup sources each time the backup is performed.

Source and Destination

The file or folder to back up is referred to as the source. The device to which a source is backed up and saved is referred to as the destination.

Full Backup

Full backup involves backing up all folders and files included in a selected backup source.

[[Real-Time Backup]]

Real-time backup involves real-time monitoring of backup sources and backup of any new or changed files.

Backup Log

A backup log contains detailed information (backup time, completion time, number of backed up files, etc.) on backup jobs.

[[Auto-Connection]]

If [[Auto-Connection]] is enabled, your Secure Drive is automatically connected when your Samsung External Hard Drive is connected.

[[Auto-Disconnection Timeout]]

This function automatically disconnects the connected Secure Drive if not accessed for the set time.

[[Normal Secure Drive]]

This option is used to create a Secure Drive of the set size. The entire space on a Secure Drive can be used after being created.

[[Dynamic Secure Drive]]

This option is used to automatically expand the size of your Secure Drive according to the amount of space being used after setting a maximum Secure Drive size. A disk can be used efficiently by expanding the size according to the amount of space being used.

Data area

Data area is the space in which data is stored on a Samsung secure hard disk. A secure hard disk can be locked to hide data or unlocked to display data.

[[Lock]]

When your Samsung secure hard disk is locked, the data area is hidden. The Samsung secure hard disk and the data saved on the disk cannot be accessed.

[[Unlock]]

When your Samsung secure hard disk is unlocked, the data area is unlocked and displayed. The Samsung secure hard disk can be accessed and the data saved on the disk can be viewed.